

Content

About Company

- History
- Organizational Structure
- Production Capacity
- Certificate

Product

- Type
- Process

Management

- Management Model
- Environment Protection
- People

A red, stylized logo or signature consisting of the letters 'QD' in a cursive, handwritten style.

History

Xi'an Qinding Precision Casting Manufacturing Co., Ltd. (referred to as "Qin Ding" or "QD") was established in 2008 after the merger of three companies, Xi'an Dingan Precision Casting Manufacturing Co., Ltd, Xi'an Dingye Precision Casting Manufacturing Co., Ltd and Xi'an Qindao Precision Casting Manufacturing Co., Ltd.

With the staff and experience from the former companies, QD has more than 15 years of manufacturing experience specializing in precision casting and related product development, production, processing and marketing.

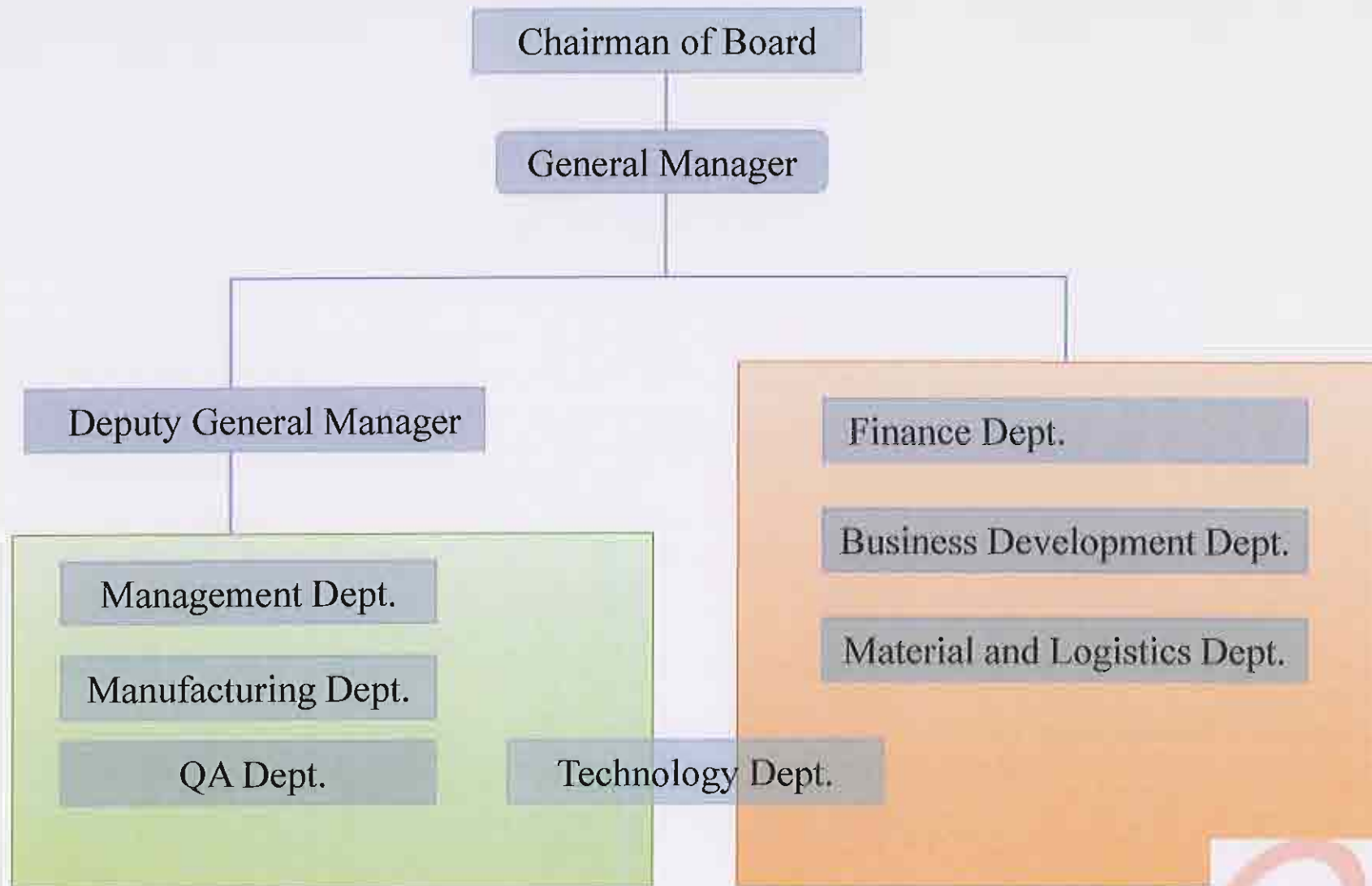
Registered capital: 10.67 million yuan

Area: 20,000 square meters

Employees: 240 people.



Organizational Structure

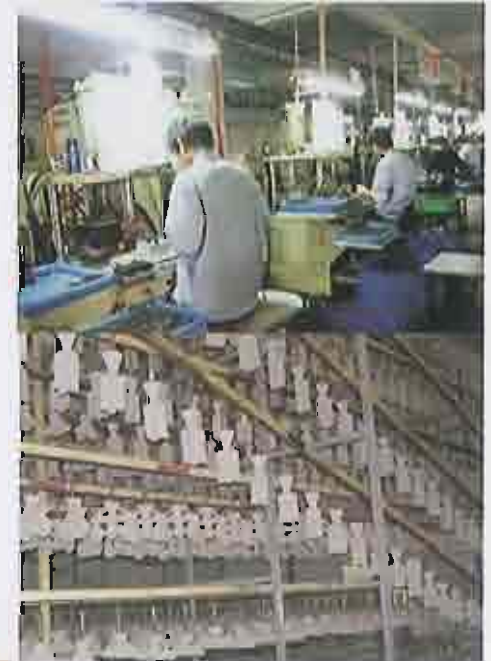


QP

Production Capacity

Qin Ding has an annual production capacity up to 1200 tons of precision castings. With full orders, annual sales value is up to 100 million RMB.

- 14 Taiwan imported disk wax injection machine
- 3 drying line
- 3 sets of intermediate frequency smelting furnace
- 12 sets of cleaning equipment
- 3 sets of heat treatment furnace
- One automatic pickling passivation surface treatment equipment
- One centrifugal casting production line
- One vacuum casting production line



Production Capacity

Qin Ding is capable to provide accurate test results of product inner quality, size, composition and mechanical properties upon client's needs by investing in advanced testing machines.



X-Ray Machine



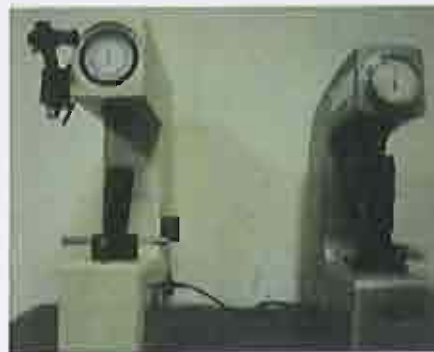
Projector



Spectrum analyzer



Tensile testing machine



Hardness Tester



Pendulum Testers



Certificate

Qin Ding believes in pursuing high quality and keeping improving quality control process. The company actively obtains quality certificate and thoroughly inputs the QC process into management and implements the quality management system certification.

- 2009 obtained ISO9001: 2008 quality management system certification
- 2010 obtained the European PED certification
- 2012 passed ISO9001: 2008 recertification test





Main Customers



Product Type

To meet the requirements of the different customers, Qin Ding has the ability to provide various products with a max dimension of 500mm × 500mm, the maximum weight of 30KG.

Main Product Series:

- Meter and Instrument
- Quick Connector
- Forestry Machinery
- Other

Main material:

- Stainless Steel
- Alloy Steel (Heat-resistant Steel)
- Special Steel (Hastelloy, Monel)
- Carbon Steel



Main Alloys Cast and Chemical Composition

Alloy Type	Standard Specification					C	Si	Mn	P	S	Cr	Ni	Mo	Others	ob/Mpa	os/Mpa	δ(%)	HARDNES SHBS	Heat Treatment
	DIN (W-Nr.)	AISI	ASTM ACI	BS3100 BS314G	JIS														
Carbon Steel & Low Alloy Steel	1.0416 GS-38	1020	415-205	CLAIA	SC410	0.15~0.25	0.2~0.6	0.4~1.0	0.04	0.04				415	205			Anneal	
	1.0446 GS-45	1025	WCB	CLAIB	SC450	0.2~0.3	0.2~0.6	0.4~1.0	0.04	0.04				485	250	22		Anneal	
	GS-34CrMo4	4135			SCM435	0.3~0.37	0.3~0.5	0.5~0.8	0.035	0.035	0.8~1.2		0.2~0.3	880~1080	665	12	269~332	Hardening+Temper	
	GS-42CrMo4	4140		CLA3	SCM440	0.38~0.43	0.15~0.35	0.75~1.0	0.035	0.04	0.8~1.1		0.15~0.25	980~1180	765	11	285~352	Hardening+Temper	
		8620		805A20	SNM220	0.18~0.23	0.15~0.35	0.7~0.9	0.035	0.04	0.4~0.6	0.4~0.7	0.15~0.25	830		17	248~341	Hardening+Temper	
Tool Steel	100MnCrW4		01	BOI	SKS3	0.9~1.0	1.0	0.9~1.2	0.04	0.04	0.5~1.0			W0.5-1				HRB<96	Anneal
	4Cr5MoSiV1		H13	BH13	SKD61	0.32~0.42	0.8~1.2	0.75	0.04	0.04	4.5~5.5		1.0~1.5	V0.8~1.2				HRC>53	
	W6Mo5Cr4V2		M2	BM2	SKH9	0.8~0.9	<1.0	0.75	0.04	0.04	3.8~4.5	W5.5~6.7	4.5~5.5	V1.6~2.2				HRC>62	Hardening+Temper
High Manganese Steel	G-X120Mn13		B-3	BW-10		1.1~1.3	1.0	12~14	0.07	0.04				637		20	<229	Hardening+Temper	
			B-1		SCMnH2	0.9~1.2	0.8	11~14	0.07	0.04				735		35	<229		
Stainless Steel	1.4305	303		303S21	SUS303	0.15	1.0	2.0	0.2	>0.15	17~19	8~10	(0.60)						
	1.4308	304	CF-8	ANC3A	SCS13	0.08	2.0	1.5	0.04	0.04	18~21	8~11	(0.50)		440	185	30	183	Solution Annealing
	1.4306	304L	CF-8	304C12	SCS19A	0.03	2.0	1.5	0.04	0.04	17~21	8~12	(0.50)		48	205	33	183	Solution Annealing
	1.4408	316	CF-8M	ANC4B	SCS14A	0.08	1.5	1.5	0.04	0.04	18~21	9~12	2~3		485	205	30	183	Solution Annealing
	1.4404	316L	CF-3M	316C12	SCS16A	0.03	1.5	1.5	0.04	0.04	17~21	9~13	2~3		485	205	30	183	Solution Annealing
	G-X10Cr13	410	CA-15	410C21	SCS1	0.15	1.5	1.0	0.04	0.04	11.5~14	(1.00)	(0.50)		620	450	18	183	Hardening+Temper
	1.4507	431		ANC2	SUS431	0.2	0.2~1	0.2~1	0.035	0.035	15.5~20	1.5~3			850~1000		8	248~302	Hardening+Temper
	1.4581	318	CF8C	ABC4C	SCS21	0.08	2.0	1.5	0.04	0.04	18~21	9~12			Nb 8xC-1.55	485	205	28	183
		17-4	CB7Cu-1		SCS24	0.07	1.0	1.0	0.04	0.04	15.5~17.5	3.5~5		CU2.5~4 Nb0.15~0.45	980	885	9	311	Precepitation H1025
Heat-Resisting Steel	GX40CrNiSi2512		HH		SCH13	0.2~0.5	2.0	2.0	0.04	0.04	24~28	11~14	(0.50)		515	240	10		Heat Treated
			HU	309C35		0.35~0.75	2.0	2.5	0.04	0.04	17~21	37~41	(0.50)		450		4		Heat Treated
	G-X15CrNiSi2520		HK30	331C40	SCH21	0.2~0.6	2.0	2.0	0.04	0.04	24~28	18~22	(0.50)		450	240	10		Heat Treated
	G-X40CrNiSi2520		HK40	310C40	SCH22	0.35~0.45	1.75	1.5	0.04	0.04	19~22	23~27	(0.50)	N<0.2	235	440	8		Heat Treated
	G-X40CrNiSi3525		HP		SCH24	0.35~0.75	2.0	2.5	0.04	0.04	24~28	33~37	(0.50)		430	235	4.5		Heat Treated

Alloy Type	Standard ASTM	C	Si	Mn	S	P	Cr	Ni	Mo	W	Co	Fe	Others	ob/Mpa	os/Mpa	δ(%)	Hardness HRC	Heat Treatment
Nickel Based Alloy	MORE2	0.15	0.5	0.5	0.03	0.03	34.5	47	0.5	15		<3.1						Heat Treated
	Hastelloy X	0.2	1.0	1.0	0.04	0.03	20.5~23	Balance	8~10	0.2~1.0	0.5~2.5	17~20		434~483	283~310	10~15	85~96HRB	Heat Treated
	NW-22	0.05~0.15	0.25~0.75	0.3~1.0	0.03	0.015	20~24	Balance	1~3	13~15	<5	<3	Λ10.2~0.5					Heat Treated

The above lists give details of the main alloys cast, and whilst many other materials are also regularly cast, it is not practical to include them all in this brochure. However, we will pleased to discuss any other material with you . As the list is only intended as a guide, for full information, the relevant standard specifications should be referred to. The comparable specifications have been compiled on the basis of chemical analysis ranges and it is important for other relevant factors to be taken into account .

Main Product– Parts for Pressure Transmitters



Raw material:

CF-8 (304)

Cf-8M (316)

CF-3 (304L)

CF-3M (316L)

Hastelloy

Monel

Per ASTM, DIN,
BS specification

QD

Main Product– Parts for Flowmeters



Non-magnetic parts

Delta Ferrite less than 0.3%

Relative Magnetic permeability ≤ 1.3



QD

Impeller of Centrifugal Pumps



Quick Coupling



QD

Main Product–Body of Flowmeters



QD

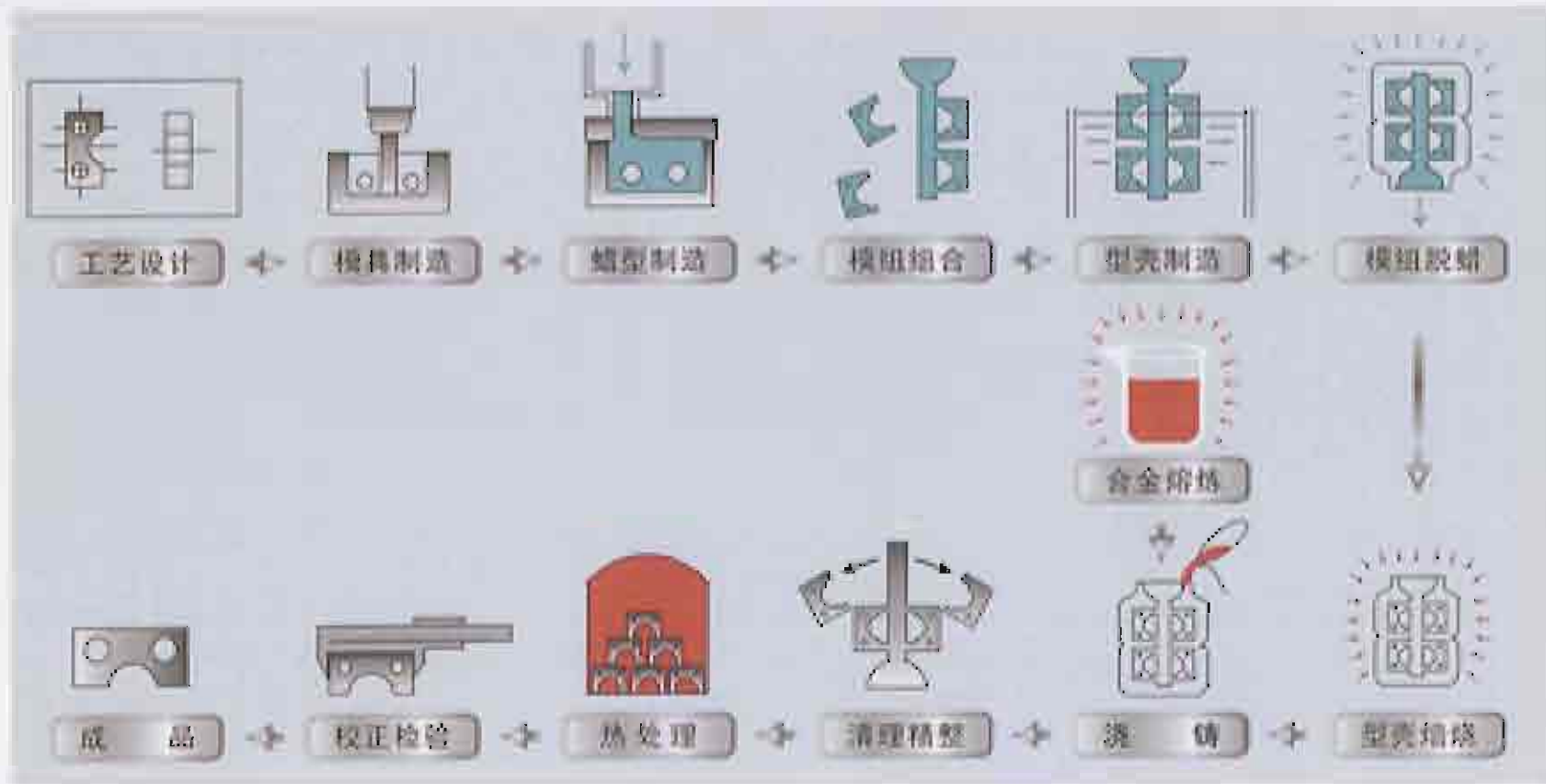
Parts



QD

Process

Qin Ding believes in using new technology to further develop new product and achieve better quality. General development and production process is as below:



Management Model

Qin Ding implements customer's requirements throughout the business management. The company focuses on quality and customer first, pursues sustainable development, and manages whole manufacture by modern management model.

- Production site visualization management
- Color management mode
- Target visualization
- Product liability tracking system
- Skills training and improvement



Environment Protection

Qin Ding fully understands the great importance of environmental protection and energy conservation. In November 2010 the company passed the assessment by Huxian Environmental Protection Agency.



People

Qin Ding is a people-oriented company. The company focuses on improving employee's learning, living and working environment, to conform to social trends and continuously improve the level of employees' income.

